



Operator (Report): ZetaView
Video Operator: ZetaView

Sample Parameters

Sample Name: IY_3rd_Batch_2nd_run_10.23.20
Comment: Sample Remarks0:
Sample Remarks1:
Sample Remarks2:
Electrolyte: water
Temperature: 20.47 °C sensed
pH 7.0 entered
Conductivity: 13.00 µS/cm sensed

Result (sizes in nm)

	Number	Concentration	Volume
Median (X50)	184.0	184.0	303.0
Span	84.3	84.3	155.8
Concentration:		3.5E+7 Particles / mL	
Dilution Factor:		50000	
Original Concentration:		1.8E+12 Particles / mL	

Measurement Parameters

Cell S/N: ZNTA

Quality

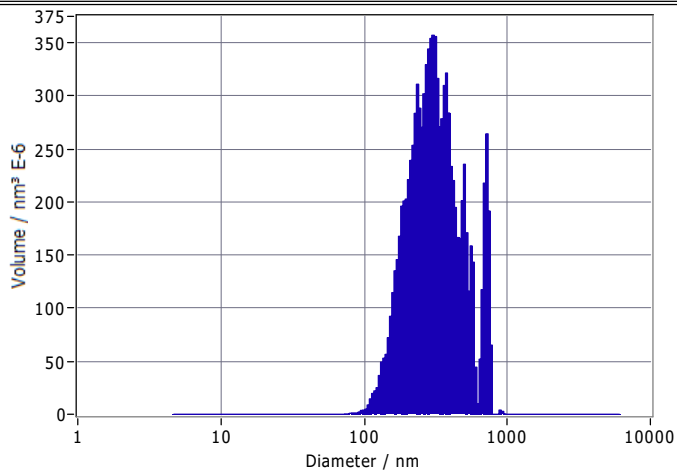
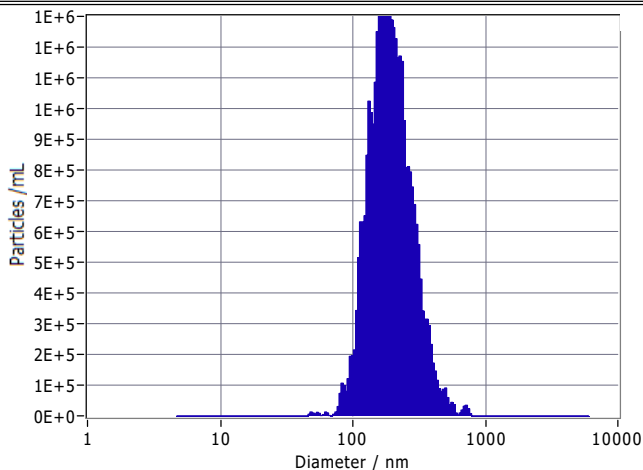
Average Counted Particles per Frame: 82
Number of Traced Particles: 1369

Measurement Mode: Size Distribution 3 Cycles

11 Positions, 2 Removed for Analysis

Analysis Parameters

Max Area: 1000, Min Area: 10, Min Brightness: 30



Peak Analysis (Concentration)

Diameter / nm	Particles/mL	FWHM / nm	Percentage
179.1	1.5E+6	150.4	99.6
727.4	3.2E+4	89.9	0.4

X Values

	Number	Concentration	Volume
X10	120.9	120.9	177.4
X50	184.0	184.0	303.0
X90	306.0	306.0	559.6
Span	1.0	1.0	1.3
Mean	207.0	207.0	346.3
StdDev	84.3	84.3	155.8



Comment

(Signature)