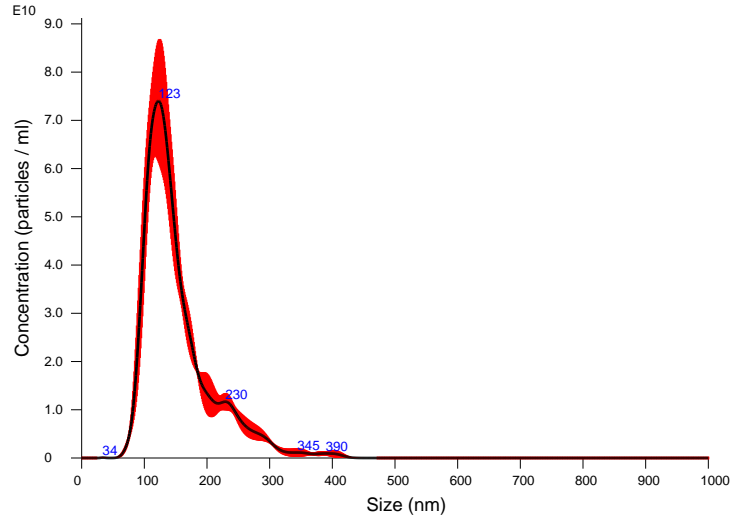


FTLA Concentration / Size graph for Experiment:
20240531_FUS_NBs 2024-05-31 14-18-30



Averaged FTLA Concentration / Size for Experiment:
20240531_FUS_NBs 2024-05-31 14-18-30
Error bars indicate + / - 1 standard error of the mean

Included Files

20240531_FUS_NBs 2024-05-31 14-18-57
20240531_FUS_NBs 2024-05-31 14-19-33
20240531_FUS_NBs 2024-05-31 14-20-10

Details

NTA Version: NTA 3.4 Build 3.4.4
Script Used: SOP Standard Measurement 02-18-28PM 31May2024.txt
Time Captured: 14:18:30 31/05/2024
Operator: Esther
Pre-treatment:
Sample Name: 20240531_FUS_NBs
Diluent:
Remarks:

Capture Settings

Camera Type: sCMOS
Laser Type: Green
Camera Level: 14
Slider Shutter: 1259
Slider Gain: 245
FPS: 25.0
Number of Frames: 749
Temperature: 25.0 - 25.0 °C
Viscosity: 1.0 cP
Dilution factor: 1 x 10e4
Syringe Pump Speed: 20

Analysis Settings

Detect Threshold: 6
Blur Size: Auto
Max Jump Distance: Auto: 12.0 - 12.4 pix

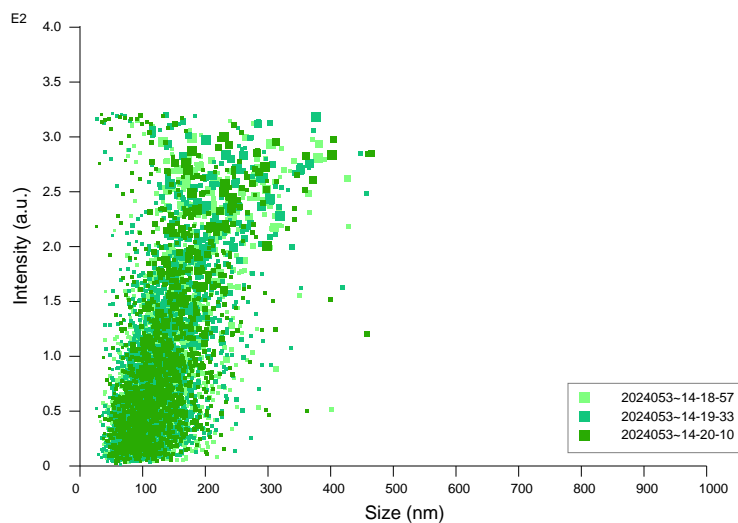
Results

Stats: Merged Data

Mean: 152.5 nm
Mode: 122.6 nm
SD: 55.7 nm
D10: 100.9 nm
D50: 136.3 nm
D90: 232.9 nm

Stats: Mean +/- Standard Error

Mean: 153.0 +/- 2.3 nm
Mode: 127.0 +/- 5.8 nm
SD: 55.9 +/- 1.5 nm
D10: 101.3 +/- 1.9 nm
D50: 137.0 +/- 2.0 nm
D90: 232.7 +/- 1.3 nm
Concentration (Upgrade): 6.03e+12 +/- 6.94e+11 particles/ml
71.0 +/- 7.0 particles/frame
76.0 +/- 6.8 centres/frame



Intensity / Size graph for Experiment:
20240531_FUS_NBs 2024-05-31 14-18-30